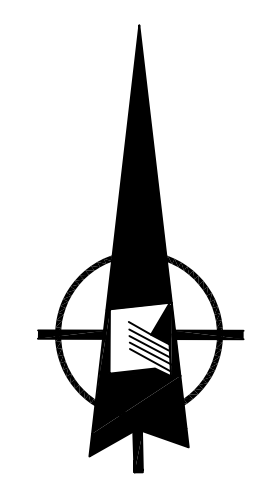


REVISIONS				
DATE	BY	LIC.NO	BLOCK	LOT
12/2018	ED CLAY	34842	6100	25-26

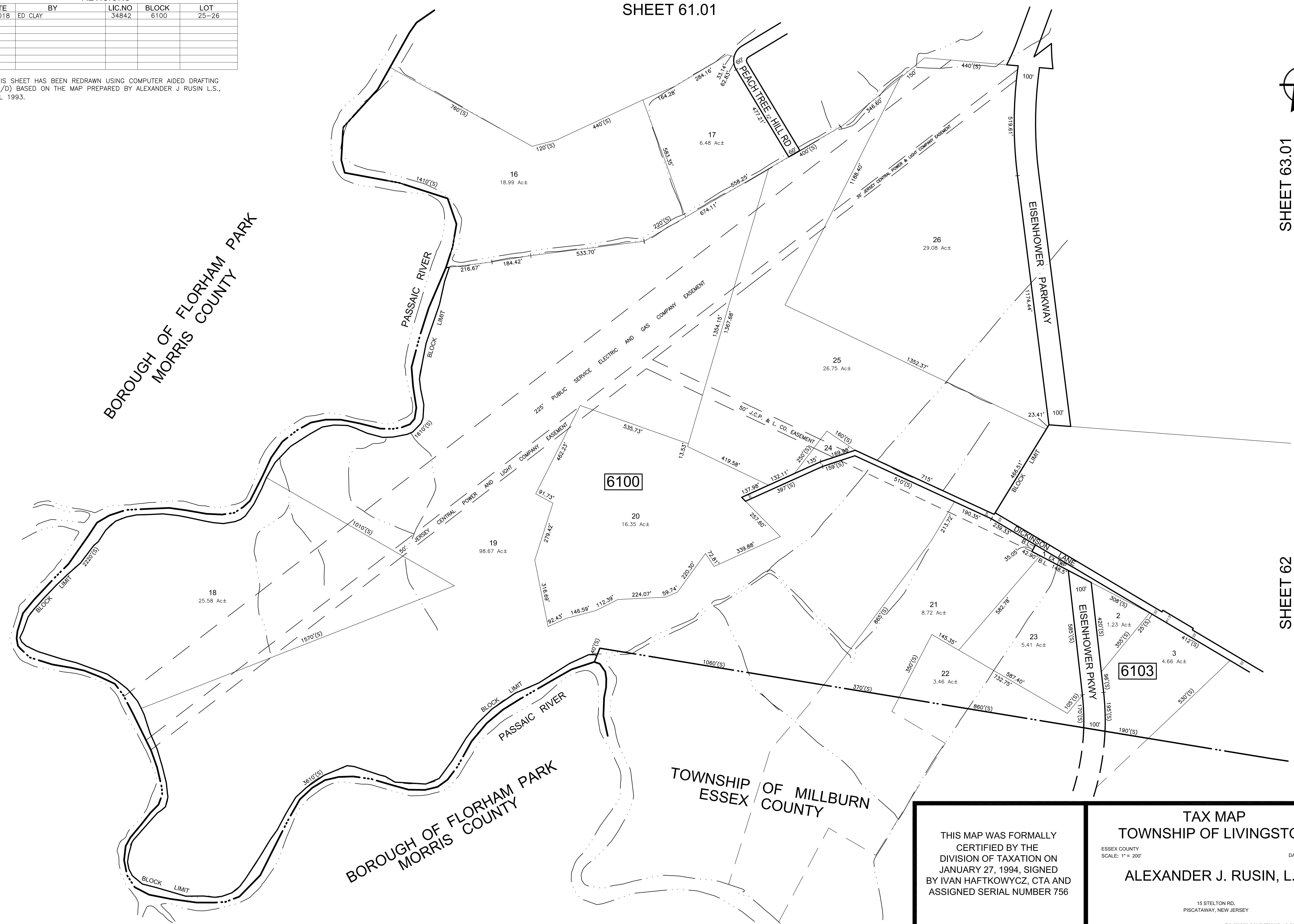
\* THIS SHEET HAS BEEN REDRAWN USING COMPUTER AIDED DRAFTING (CAD/D) BASED ON THE MAP PREPARED BY ALEXANDER J RUSIN L.S., APRIL 1993.

SHEET 61.01



SHEET 63.01

SHEET 62



BOROUGH OF FLORHAM PARK  
MORRIS COUNTY

BOROUGH OF FLORHAM PARK  
MORRIS COUNTY

TOWNSHIP OF MILLBURN  
ESSEX COUNTY

THIS MAP WAS FORMALLY CERTIFIED BY THE DIVISION OF TAXATION ON JANUARY 27, 1994, SIGNED BY IVAN HAFTKOWYCZ, CTA AND ASSIGNED SERIAL NUMBER 756

TAX MAP  
TOWNSHIP OF LIVINGSTON  
ESSEX COUNTY NEW JERSEY  
SCALE: 1" = 200'  
DATE: APRIL, 1993  
ALEXANDER J. RUSIN, L.S.

15 STELTON RD.  
PISCATAWAY, NEW JERSEY

TO SHOW CONDITIONS AS OF MARCH 2018