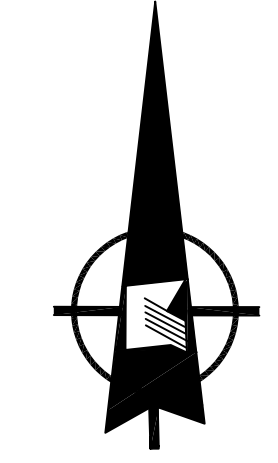
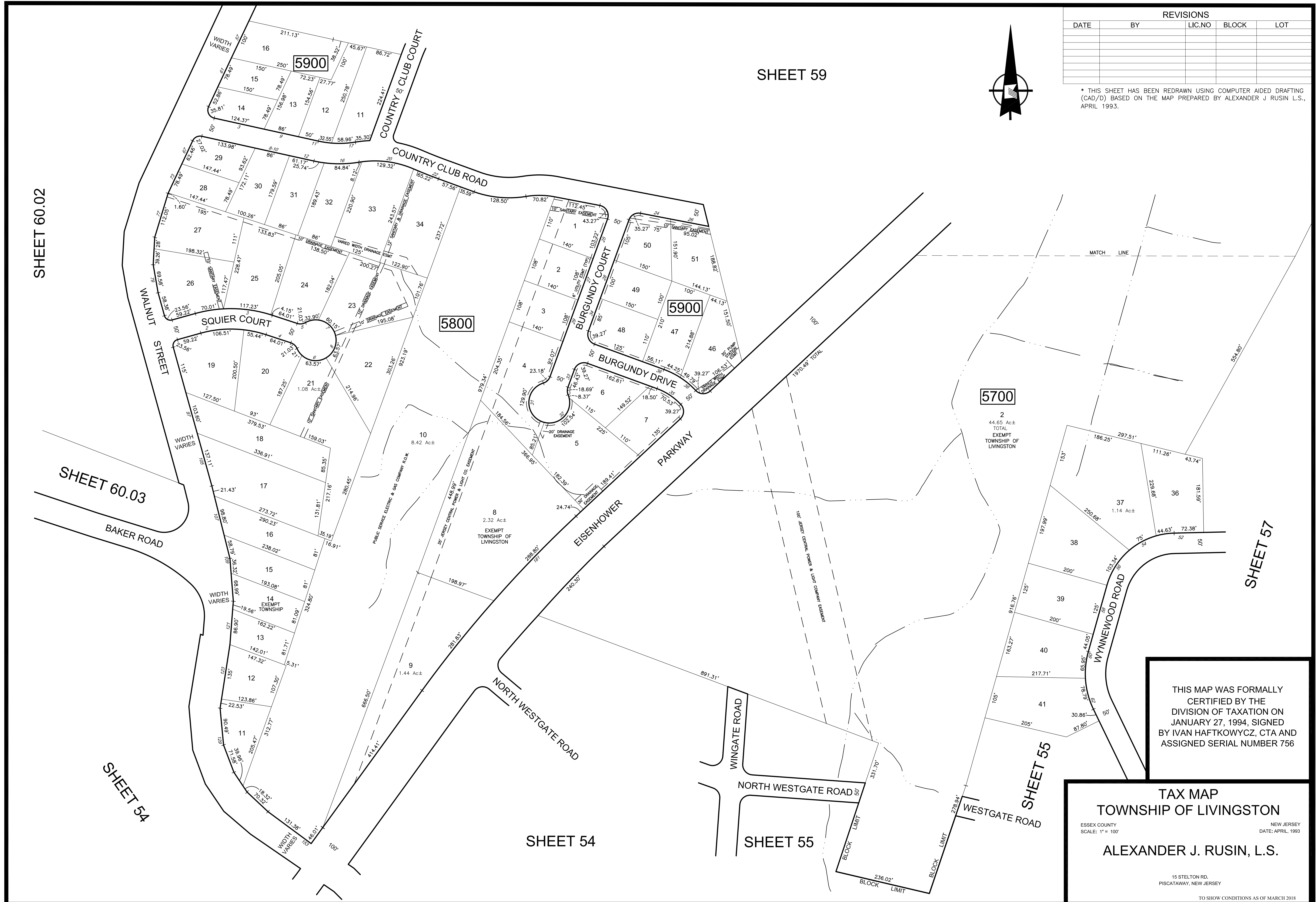


REVISIONS				
DATE	BY	LIC.NO	BLOCK	LOT

* THIS SHEET HAS BEEN REDRAWN USING COMPUTER AIDED DRAFTING (CAD/D) BASED ON THE MAP PREPARED BY ALEXANDER J. RUSIN L.S., APRIL 1993.



SHEET 59



SHEET 60.02

SHEET 60.03

SHEET 54

SHEET 54

SHEET 55

SHEET 57

5700

2
44.65 Ac±
TOTAL
EXEMPT
TOWNSHIP OF
LIVINGSTON

5800

5900

5900

THIS MAP WAS FORMALLY
CERTIFIED BY THE
DIVISION OF TAXATION ON
JANUARY 27, 1994, SIGNED
BY IVAN HAFTKOWYCZ, CTA AND
ASSIGNED SERIAL NUMBER 756

TAX MAP
TOWNSHIP OF LIVINGSTON
ESSEX COUNTY NEW JERSEY
SCALE: 1" = 100' DATE: APRIL, 1993
ALEXANDER J. RUSIN, L.S.
15 STELTON RD.
PISCATAWAY, NEW JERSEY
TO SHOW CONDITIONS AS OF MARCH 2018