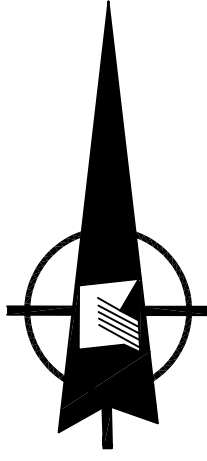
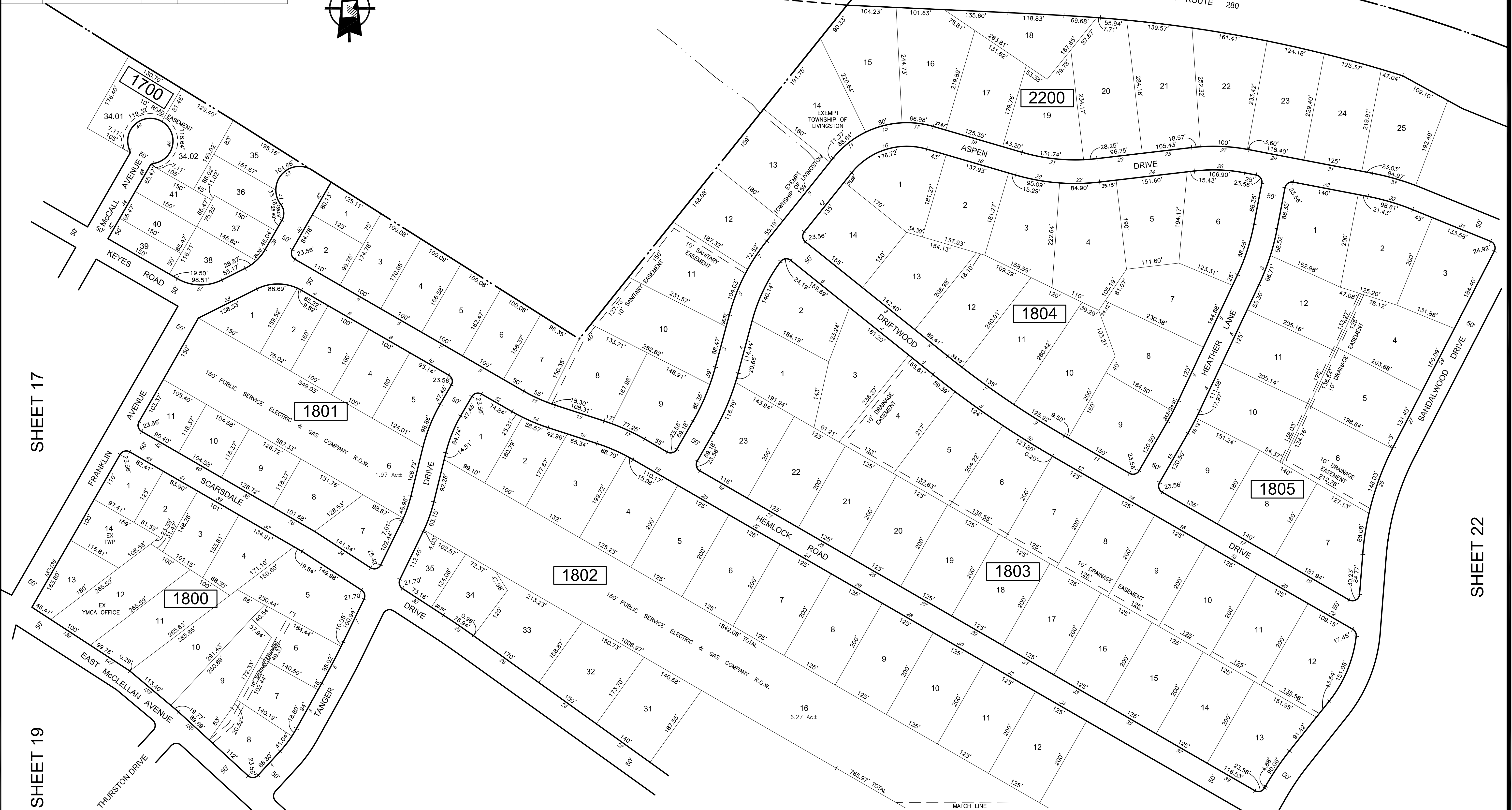


REVISIONS				
DATE	BY	LIC.NO	BLOCK	LOT
04/2012	WILLIAM T. MANNING, P.L.S.	246504060800		
12/2017	ED CLAY	34842	1700	34



BOROUGH OF ROSELAND
ESSEX COUNTY



SHEET 17

SHEET 19

SHEET 22

SHEET 19

* THIS SHEET HAS BEEN REDRAWN USING COMPUTER AIDED DRAFTING (CAD/D) BASED ON THE MAP PREPARED BY ALEXANDER J RUSIN L.S., APRIL 1993.

THIS MAP WAS FORMALLY
CERTIFIED BY THE
DIVISION OF TAXATION ON
JANUARY 27, 1994, SIGNED
BY IVAN HAFTKOWYCZ, CTA AND
ASSIGNED SERIAL NUMBER 756

TAX MAP
TOWNSHIP OF LIVINGSTON
ESSEX COUNTY
SCALE: 1" = 100'
NEW JERSEY
DATE: APRIL, 1993
ALEXANDER J. RUSIN, L.S.

15 STELTON RD.
PISCATAWAY, NEW JERSEY
TO SHOW CONDITIONS AS OF MARCH 2018