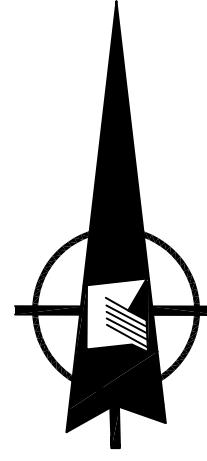


REVISIONS				
DATE	BY	LIC.NO	BLOCK	LOT

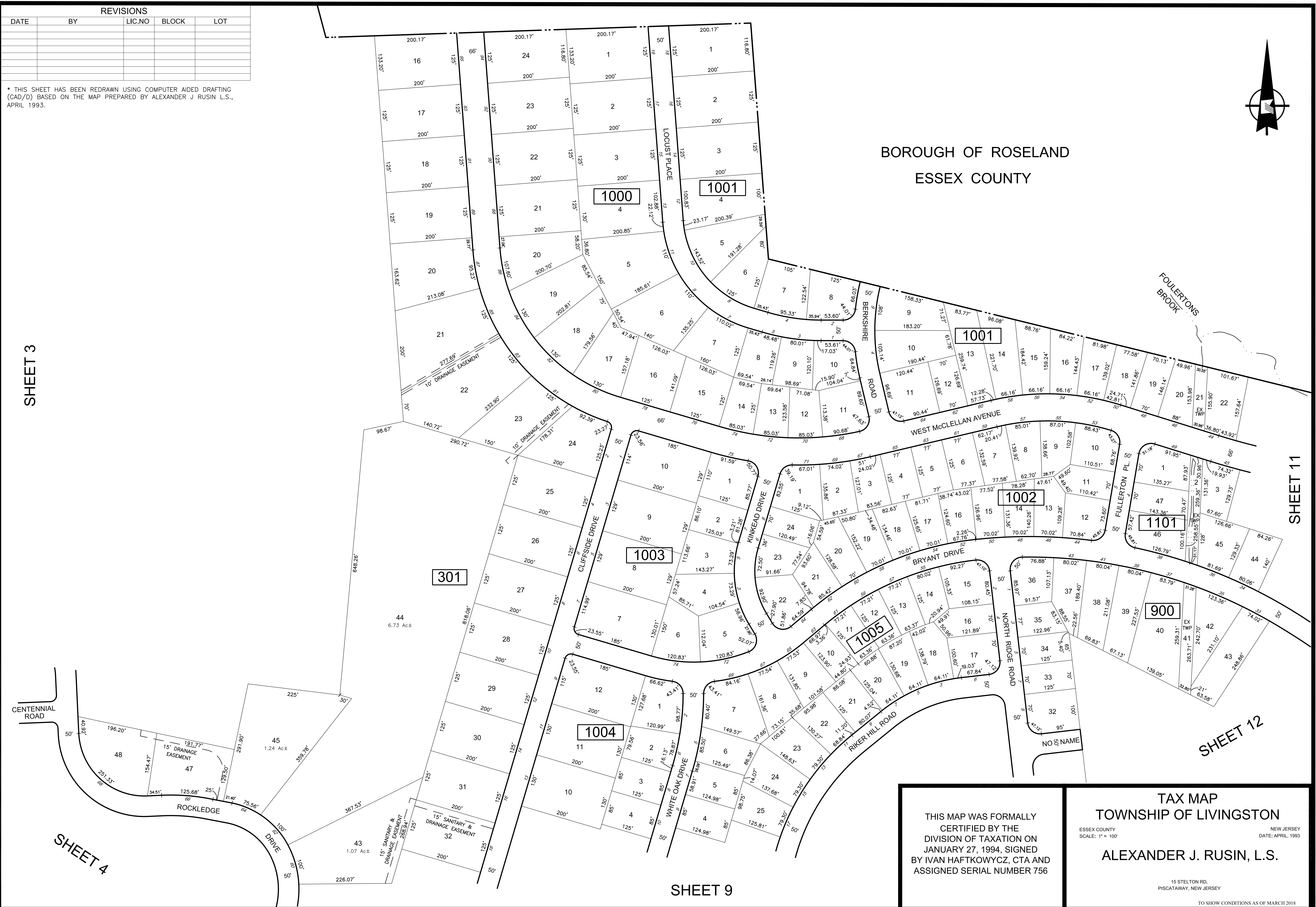
\* THIS SHEET HAS BEEN REDRAWN USING COMPUTER AIDED DRAFTING (CAD/D) BASED ON THE MAP PREPARED BY ALEXANDER J. RUSIN L.S., APRIL 1993.



BOROUGH OF ROSELAND  
ESSEX COUNTY

SHEET 3

SHEET 11



SHEET 4

SHEET 12

SHEET 9

THIS MAP WAS FORMALLY  
CERTIFIED BY THE  
DIVISION OF TAXATION ON  
JANUARY 27, 1994, SIGNED  
BY IVAN HAFTKOWICZ, CTA AND  
ASSIGNED SERIAL NUMBER 756

TAX MAP  
TOWNSHIP OF LIVINGSTON  
ESSEX COUNTY  
SCALE: 1" = 100'  
NEW JERSEY  
DATE: APRIL, 1993  
ALEXANDER J. RUSIN, L.S.  
15 STELTON RD.  
PISCATAWAY, NEW JERSEY  
TO SHOW CONDITIONS AS OF MARCH 2018