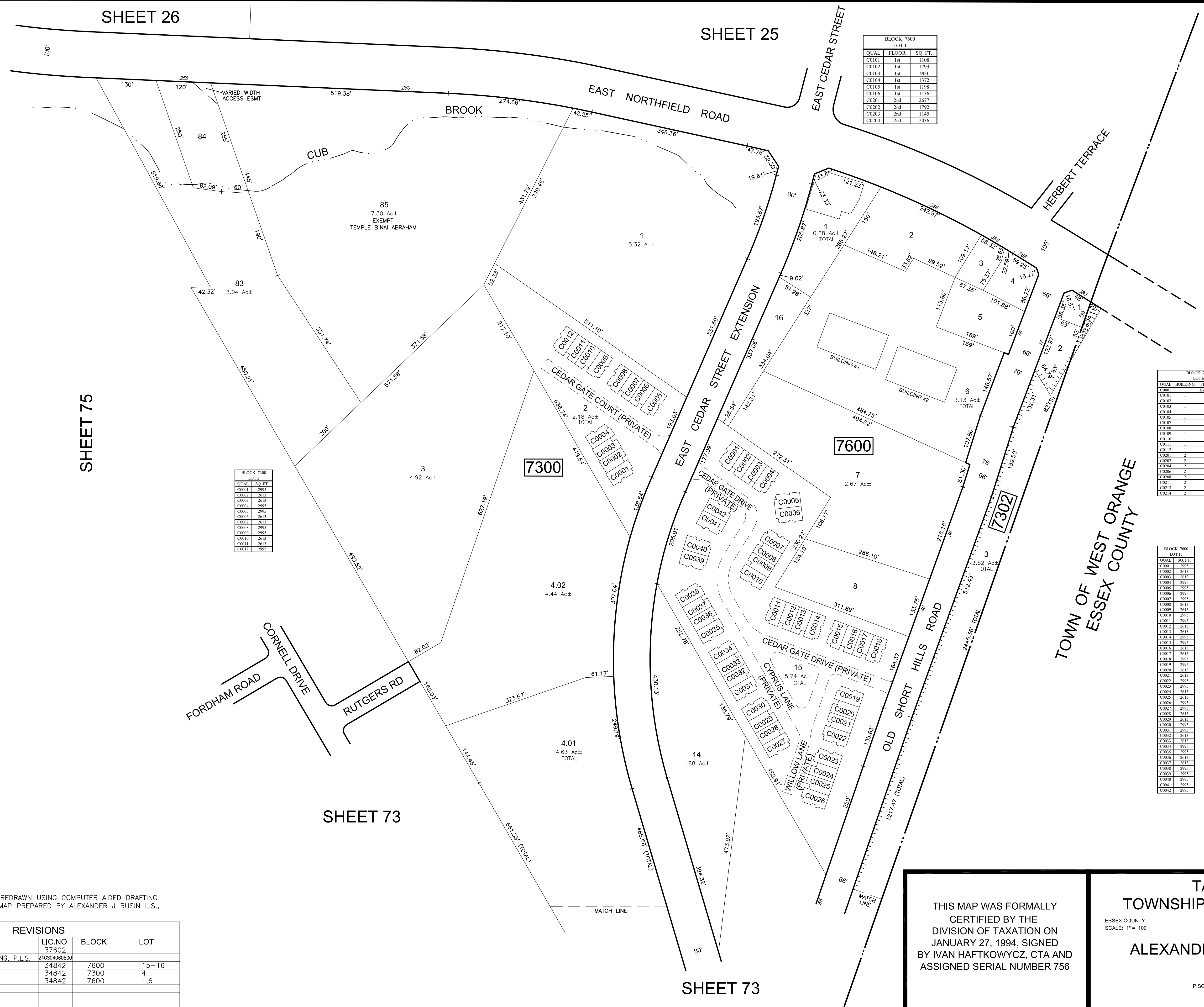


SHEET 26

SHEET 25



BLOCK 7600 LOT 1		
QUAL	FLOOR	SQ. FT.
C0101	1st	1108
C0102	1st	1793
C0103	1st	900
C0104	1st	1372
C0105	1st	1198
C0106	1st	1136
C0201	2nd	2677
C0202	2nd	1792
C0203	2nd	1145
C0204	2nd	2036

BLOCK 7300 LOT 2		
QUAL	FLOOR	SQ. FT.
C0001	2nd	299
C0002	2nd	2613
C0003	2nd	2613
C0004	2nd	2995
C0005	2nd	2995
C0006	2nd	2613
C0007	2nd	2613
C0008	2nd	2995
C0009	2nd	2995
C0010	2nd	2613
C0011	2nd	2613
C0012	2nd	2995

BLOCK 7600 LOT 1		
QUAL	FLOOR	SQ. FT.
C0101	1st	1685
C0102	1st	2038
C0103	1st	3070
C0104	1st	1584
C0105	1st	1277
C0106	1st	2056
C0107	1st	1350
C0108	1st	1670
C0109	1st	1347
C0110	1st	1478
C0111	1st	757
C0112	1st	2231
C0113	1st	1692
C0114	1st	4513
C0204	2nd	2791
C0205	2nd	431
C0206	2nd	2739
C0211	2nd	629
C0212	2nd	892
C0214	2nd	816

BLOCK 7600 LOT 15		
QUAL	FLOOR	SQ. FT.
C0001	2nd	2613
C0002	2nd	2613
C0003	2nd	2613
C0004	2nd	2995
C0005	2nd	2995
C0006	2nd	2995
C0007	2nd	2613
C0008	2nd	2613
C0009	2nd	2613
C0010	2nd	2995
C0011	2nd	2995
C0012	2nd	2613
C0013	2nd	2613
C0014	2nd	2995
C0015	2nd	2995
C0016	2nd	2613
C0017	2nd	2613
C0018	2nd	2995
C0019	2nd	2995
C0020	2nd	2613
C0021	2nd	2613
C0022	2nd	2995
C0023	2nd	2995
C0024	2nd	2613
C0025	2nd	2613
C0026	2nd	2613
C0027	2nd	2995
C0028	2nd	2613
C0029	2nd	2613
C0030	2nd	2995
C0031	2nd	2613
C0032	2nd	2613
C0033	2nd	2613
C0034	2nd	2995
C0035	2nd	2995
C0036	2nd	2613
C0037	2nd	2613
C0038	2nd	2995
C0039	2nd	2995
C0040	2nd	2995
C0041	2nd	2995
C0042	2nd	2995

SHEET 75

SHEET 73

SHEET 73

* THIS SHEET HAS BEEN REDRAWN USING COMPUTER AIDED DRAFTING (CAD/D) BASED ON THE MAP PREPARED BY ALEXANDER J RUSIN L.S., APRIL 1993.

REVISIONS				
DATE	BY	LIC.NO	BLOCK	LOT
10/2007	PETER J. MOORE	37602		
	WILLIAM T. MANNING, P.L.S.	24650406800		
12/2017	ED CLAY	34842	7600	15-16
12/2017	ED CLAY	34842	7300	4
12/2017	ED CLAY	34842	7600	1,6

THIS MAP WAS FORMALLY CERTIFIED BY THE DIVISION OF TAXATION ON JANUARY 27, 1994, SIGNED BY IVAN HAFTKOWYCZ, CTA AND ASSIGNED SERIAL NUMBER 756

TAX MAP TOWNSHIP OF LIVINGSTON ESSEX COUNTY NEW JERSEY SCALE: 1" = 100' DATE: APRIL, 1993 ALEXANDER J. RUSIN, L.S.

15 STELTON RD. PISCATAWAY, NEW JERSEY TO SHOW CONDITIONS AS OF MARCH 2018