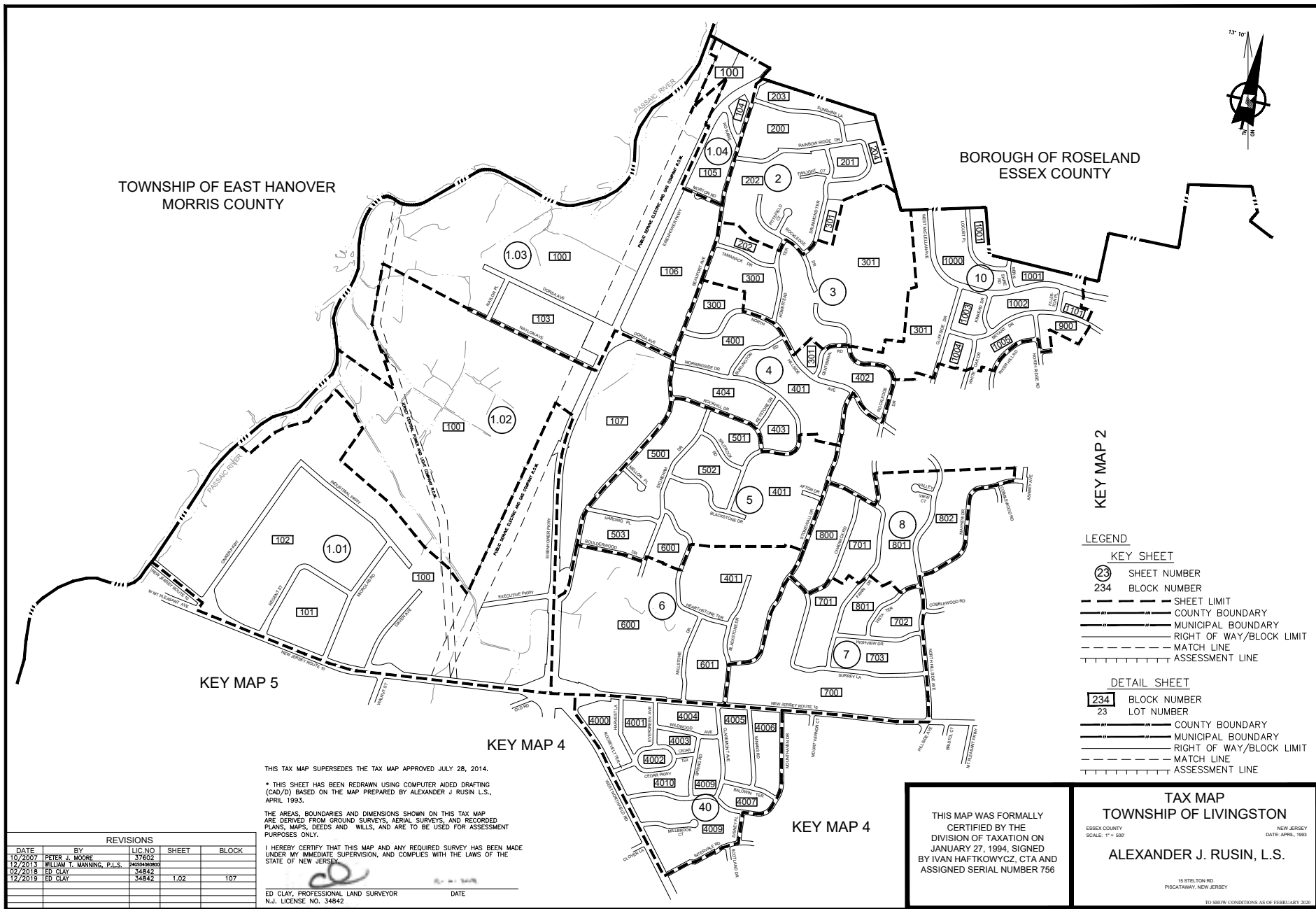


# KEY MAP 1



KEY MAP 2

- LEGEND**
- KEY SHEET**
- 23 SHEET NUMBER
  - 234 BLOCK NUMBER
  - SHEET LIMIT
  - COUNTY BOUNDARY
  - MUNICIPAL BOUNDARY
  - RIGHT OF WAY/BLOCK LIMIT
  - MATCH LINE
  - ASSESSMENT LINE
- DETAIL SHEET**
- 234 BLOCK NUMBER
  - 23 LOT NUMBER
  - COUNTY BOUNDARY
  - MUNICIPAL BOUNDARY
  - RIGHT OF WAY/BLOCK LIMIT
  - MATCH LINE
  - ASSESSMENT LINE

KEY MAP 5

KEY MAP 4

KEY MAP 4

THIS TAX MAP SUPERSEDES THE TAX MAP APPROVED JULY 28, 2014.  
 \* THIS SHEET HAS BEEN REDRAWN USING COMPUTER AIDED DRAFTING (CAD/D) BASED ON THE MAP PREPARED BY ALEXANDER J. RUSIN, L.S., APRIL 1993.

THE AREAS, BOUNDARIES AND DIMENSIONS SHOWN ON THIS TAX MAP ARE DERIVED FROM GROUND SURVEYS, AERIAL SURVEYS, AND RECORDED PLANS, MAPS, DEEDS AND WILLS, AND ARE TO BE USED FOR ASSESSMENT PURPOSES ONLY.

I HEREBY CERTIFY THAT THIS MAP AND ANY REQUIRED SURVEY HAS BEEN MADE UNDER MY IMMEDIATE SUPERVISION, AND COMPLIES WITH THE LAWS OF THE STATE OF NEW JERSEY.

ED CLAY, PROFESSIONAL LAND SURVEYOR DATE  
 N.J. LICENSE NO. 34842

REVISIONS				
DATE	BY	LIC. NO.	SHEET	BLOCK
10/2007	PETER J. MOORE	37602		
12/2013	WILLIAM T. MANNING, P.L.S.	262940080		
02/2018	ED CLAY	34842	1.02	107
12/2019	ED CLAY	34842	1.02	107

THIS MAP WAS FORMALLY CERTIFIED BY THE DIVISION OF TAXATION ON JANUARY 27, 1994, SIGNED BY IVAN HAFTKOWYCZ, CTA AND ASSIGNED SERIAL NUMBER 756

**TAX MAP**  
**TOWNSHIP OF LIVINGSTON**  
 ESSEX COUNTY NEW JERSEY  
 SCALE: 1" = 500' DATE: APRIL, 1993  
**ALEXANDER J. RUSIN, L.S.**  
 15 STELTON RD.  
 PISCATAWAY, NEW JERSEY  
TO SHOW CONDITIONS AS OF FEBRUARY 2020

# KEY MAP 1