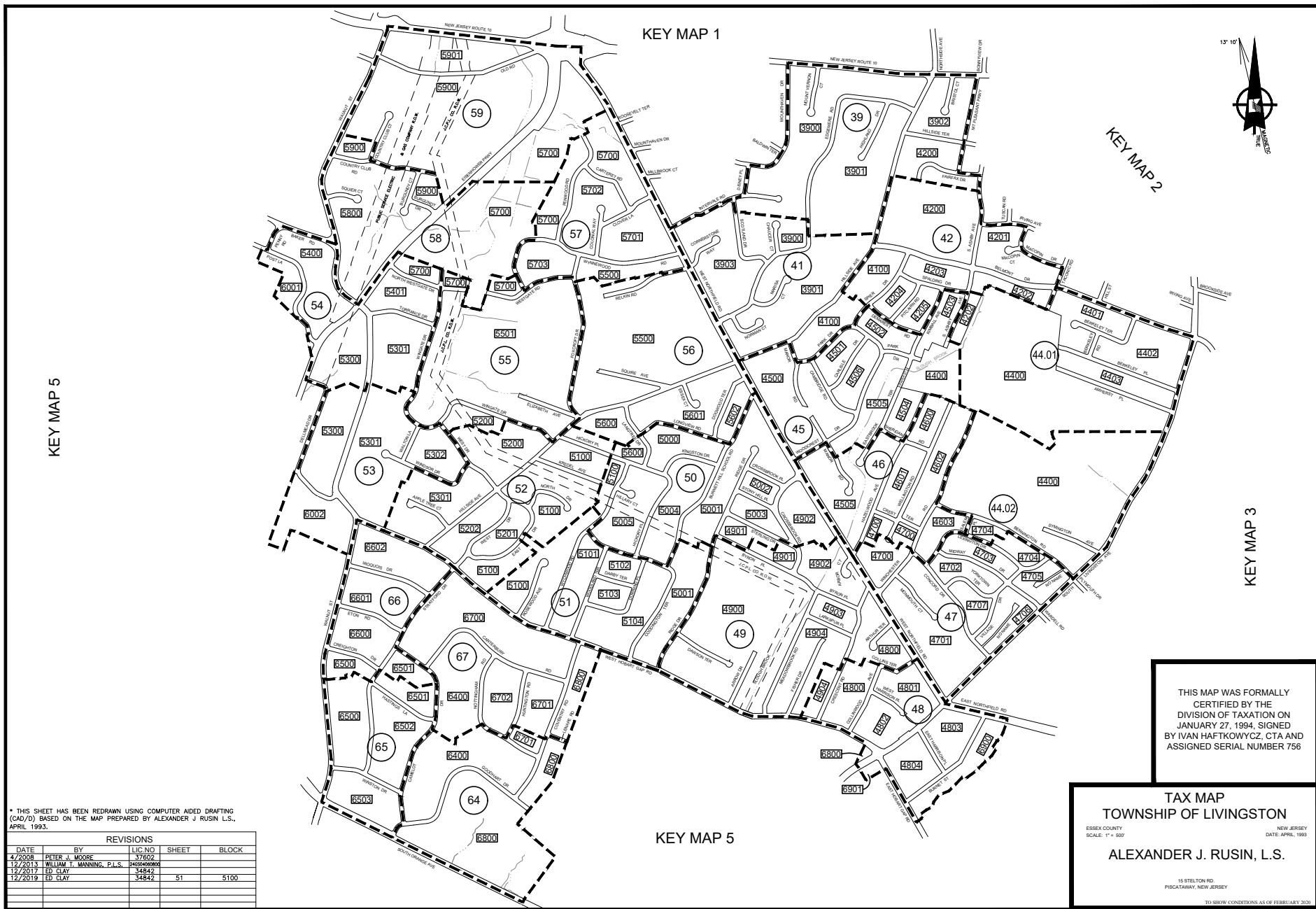


KEY MAP 4



* THIS SHEET HAS BEEN REDRAWN USING COMPUTER AIDED DRAFTING (CAD/D) BASED ON THE MAP PREPARED BY ALEXANDER J RUSIN L.S., APRIL 1993.

REVISIONS				
DATE	BY	LIC NO	SHEET	BLOCK
4/2008	PETER J. MOORE	37602		
12/2013	WILLIAM T. MANNING, P.L.S.	046200000		
12/2017	ED CLAY	34842		
12/2019	ED CLAY	34842	51	5100

THIS MAP WAS FORMALLY CERTIFIED BY THE DIVISION OF TAXATION ON JANUARY 27, 1994, SIGNED BY IVAN HAFTKOWYCZ, CTA AND ASSIGNED SERIAL NUMBER 756

TAX MAP
TOWNSHIP OF LIVINGSTON
 ESSEX COUNTY NEW JERSEY
 SCALE: 1" = 500' DATE: APRIL 1993
ALEXANDER J. RUSIN, L.S.
 15 STELTON RD. PISCATAWAY, NEW JERSEY
 TO SHOW CONDITIONS AS OF FEBRUARY 2020

KEY MAP 4