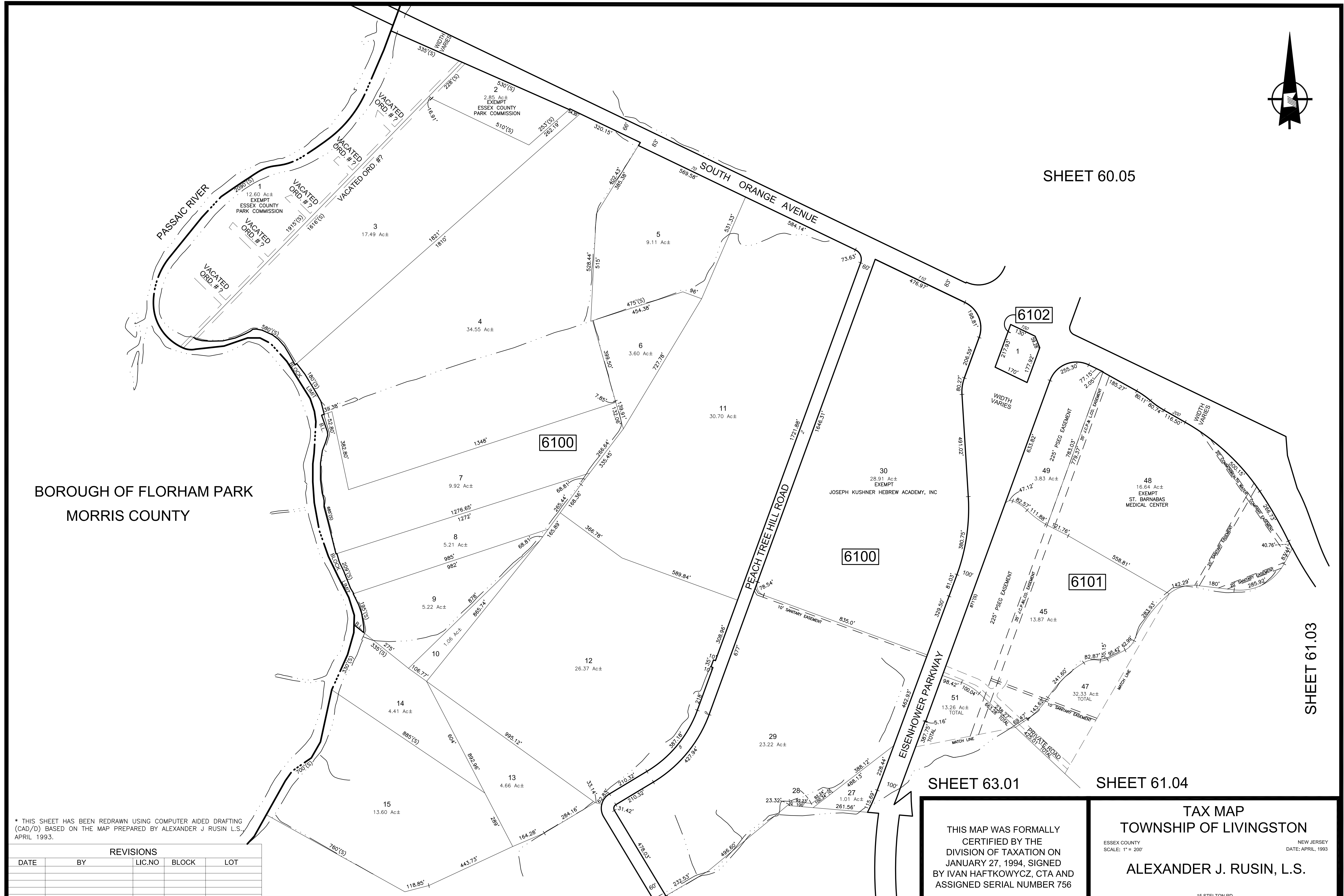


SHEET 60.05

SHEET 61.03

BOROUGH OF FLORHAM PARK
MORRIS COUNTY



* THIS SHEET HAS BEEN REDRAWN USING COMPUTER AIDED DRAFTING (CAD/D) BASED ON THE MAP PREPARED BY ALEXANDER J RUSIN L.S., APRIL 1993.

REVISIONS				
DATE	BY	LIC.NO	BLOCK	LOT

SHEET 61.02

SHEET 63.01

SHEET 61.04

THIS MAP WAS FORMALLY CERTIFIED BY THE DIVISION OF TAXATION ON JANUARY 27, 1994, SIGNED BY IVAN HAFTKOWYCZ, CTA AND ASSIGNED SERIAL NUMBER 756

TAX MAP
TOWNSHIP OF LIVINGSTON
ESSEX COUNTY
SCALE: 1" = 200'
NEW JERSEY
DATE: APRIL, 1993
ALEXANDER J. RUSIN, L.S.

15 STELTON RD.
PISCATAWAY, NEW JERSEY

TO SHOW CONDITIONS AS OF MARCH 2018