

SHEET 60.04

SHEET 53

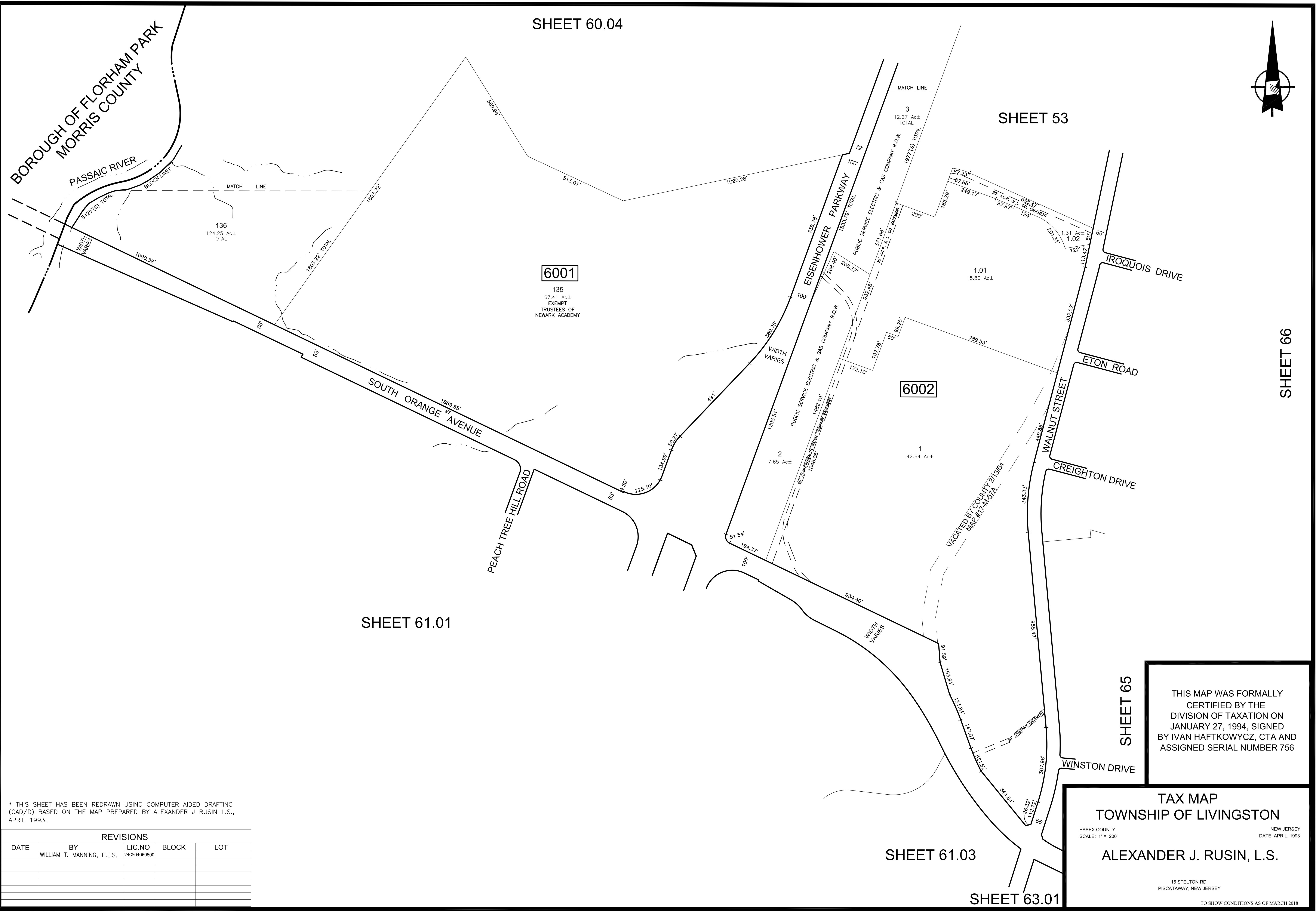
SHEET 66

SHEET 65

SHEET 61.03

SHEET 63.01

SHEET 61.01



6001  
135  
67.41 Ac±  
EXEMPT  
TRUSTEES OF  
NEWARK ACADEMY

6002  
1  
42.64 Ac±

136  
124.25 Ac±  
TOTAL

\* THIS SHEET HAS BEEN REDRAWN USING COMPUTER AIDED DRAFTING (CAD/D) BASED ON THE MAP PREPARED BY ALEXANDER J RUSIN L.S., APRIL 1993.

| REVISIONS |                            |              |       |     |
|-----------|----------------------------|--------------|-------|-----|
| DATE      | BY                         | LIC.NO       | BLOCK | LOT |
|           | WILLIAM T. MANNING, P.L.S. | 246SD4060800 |       |     |
|           |                            |              |       |     |
|           |                            |              |       |     |
|           |                            |              |       |     |
|           |                            |              |       |     |

THIS MAP WAS FORMALLY CERTIFIED BY THE DIVISION OF TAXATION ON JANUARY 27, 1994, SIGNED BY IVAN HAFTKOWYCZ, CTA AND ASSIGNED SERIAL NUMBER 756

**TAX MAP**  
**TOWNSHIP OF LIVINGSTON**  
 ESSEX COUNTY NEW JERSEY  
 SCALE: 1" = 200' DATE: APRIL, 1993  
**ALEXANDER J. RUSIN, L.S.**  
 15 STELTON RD.  
 PISCATAWAY, NEW JERSEY  
 TO SHOW CONDITIONS AS OF MARCH 2018