

SHEET 35

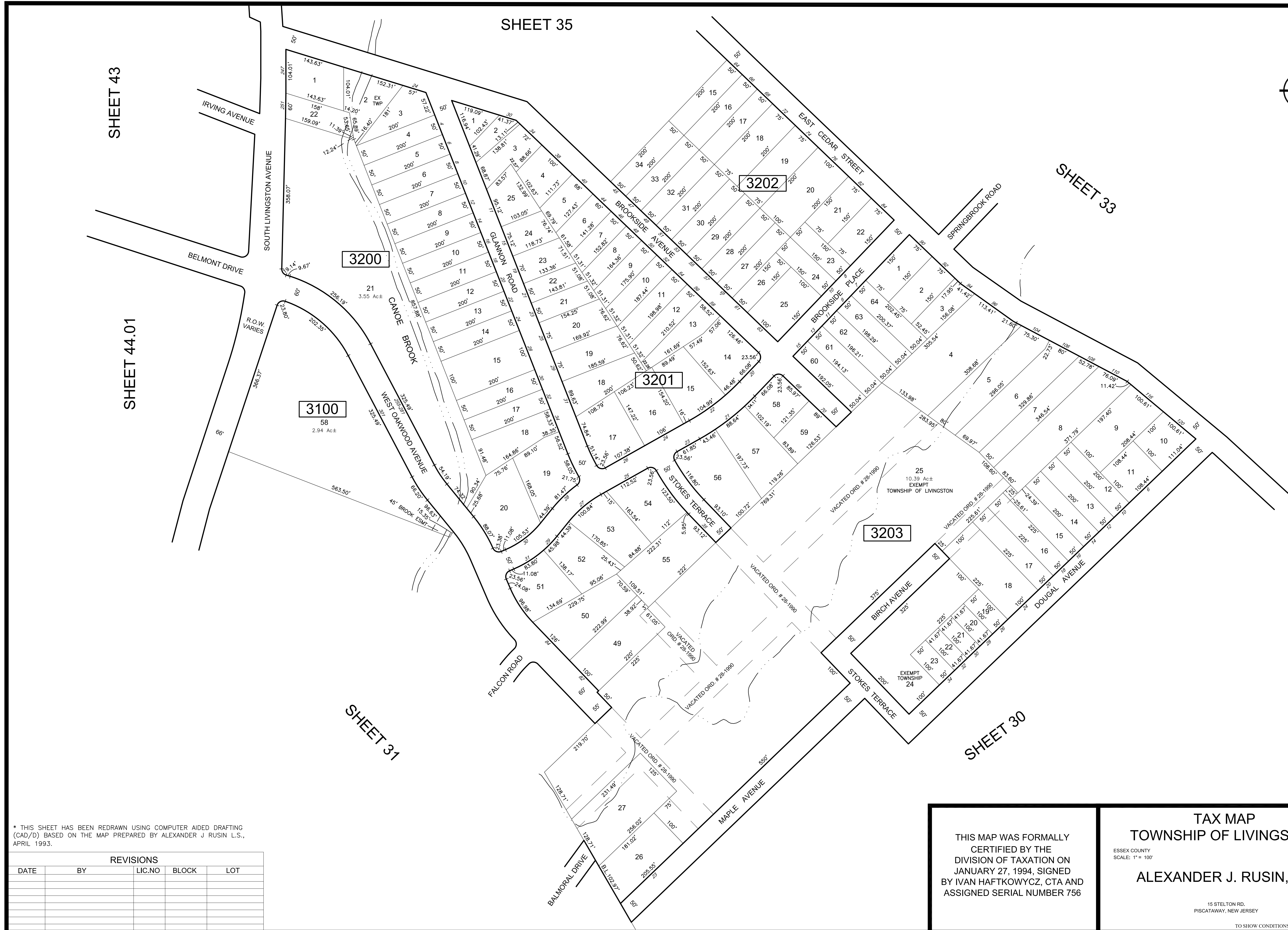
SHEET 43

SHEET 33

SHEET 44.01

SHEET 31

SHEET 30



\* THIS SHEET HAS BEEN REDRAWN USING COMPUTER AIDED DRAFTING (CAD/D) BASED ON THE MAP PREPARED BY ALEXANDER J RUSIN L.S., APRIL 1993.

REVISIONS				
DATE	BY	LIC.NO	BLOCK	LOT

THIS MAP WAS FORMALLY CERTIFIED BY THE DIVISION OF TAXATION ON JANUARY 27, 1994, SIGNED BY IVAN HAFTKOWYCZ, CTA AND ASSIGNED SERIAL NUMBER 756

**TAX MAP**  
**TOWNSHIP OF LIVINGSTON**

ESSEX COUNTY NEW JERSEY  
 SCALE: 1" = 100' DATE: APRIL, 1993

**ALEXANDER J. RUSIN, L.S.**

15 STELTON RD.  
 PISCATAWAY, NEW JERSEY

TO SHOW CONDITIONS AS OF MARCH 2018