

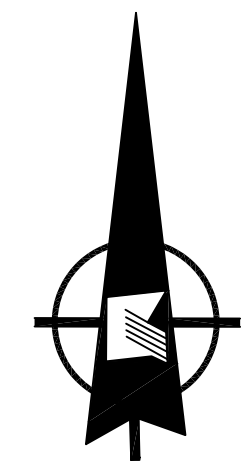
SHEET 8

SHEET 13

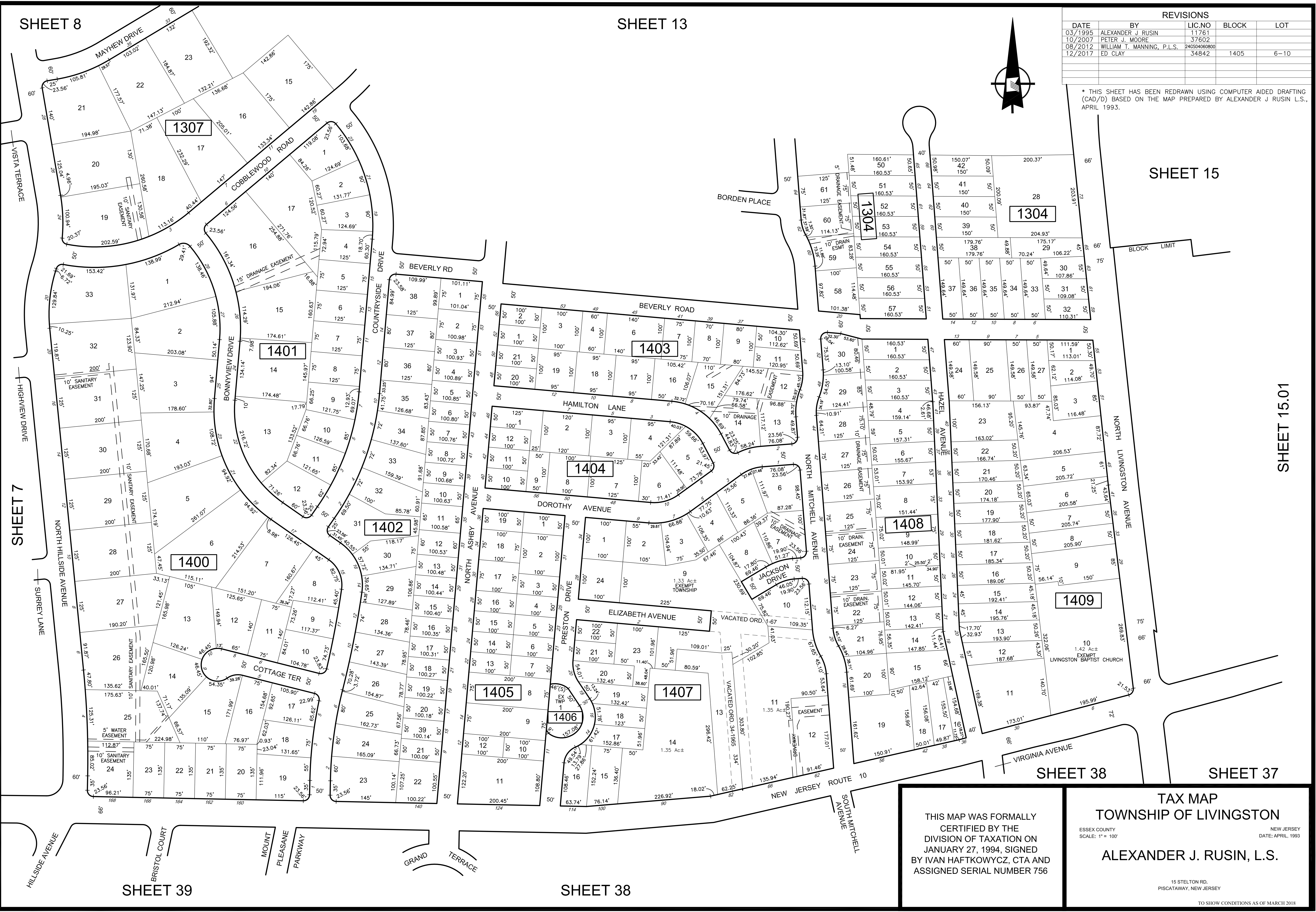
REVISIONS

DATE	BY	LIC.NO	BLOCK	LOT
03/1995	ALEXANDER J. RUSIN	11761		
10/2007	PETER J. MOORE	37602		
08/2012	WILLIAM T. MANNING, P.L.S.	246504060800		
12/2017	ED CLAY	34842	1405	6-10

\* THIS SHEET HAS BEEN REDRAWN USING COMPUTER AIDED DRAFTING (CAD/D) BASED ON THE MAP PREPARED BY ALEXANDER J RUSIN L.S., APRIL 1993.



SHEET 15



SHEET 15.01

TAX MAP  
TOWNSHIP OF LIVINGSTON

ESSEX COUNTY NEW JERSEY  
SCALE: 1" = 100' DATE: APRIL, 1993

ALEXANDER J. RUSIN, L.S.

15 STELTON RD.  
PISCATAWAY, NEW JERSEY

TO SHOW CONDITIONS AS OF MARCH 2018

THIS MAP WAS FORMALLY  
CERTIFIED BY THE  
DIVISION OF TAXATION ON  
JANUARY 27, 1994, SIGNED  
BY IVAN HAFTKOWYCZ, CTA AND  
ASSIGNED SERIAL NUMBER 756